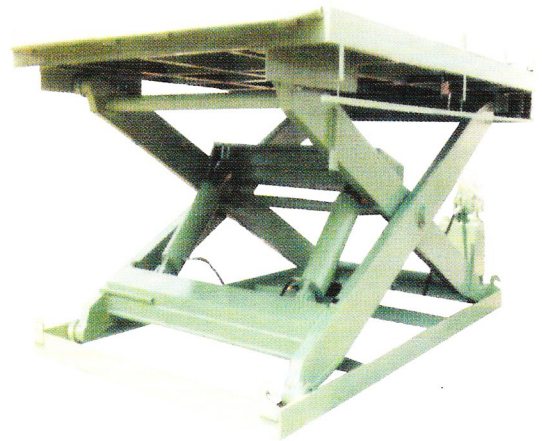




ISO 9001 : 2008 Certified  
JKKP : BT86 / 060  
Reg. GST no. : 000903725056

[www.liftech.com.my](http://www.liftech.com.my)



# SCISSORS LIFTER

**LIFTECH ENGINEERING (KL) SDN BHD** (Co. No. 412073-V)

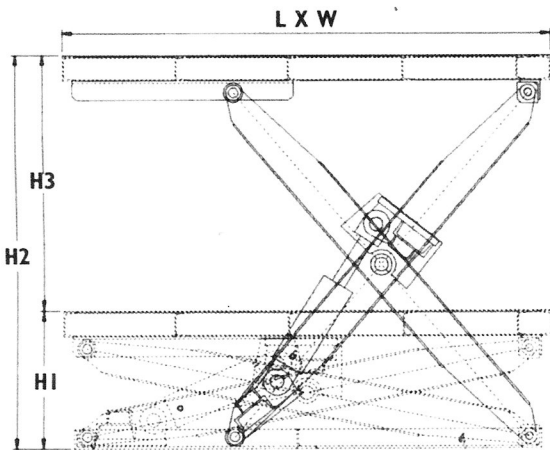
No 10 & 12, Jalan TPP 5/8, Taman Perindustrian Puchong, 47100 Puchong, Selangor Darul Ehsan, Malaysia.  
Tel: +60 3 8061 9598 Fax: +60 3 8061 0841 Email: sales@liftech.com.my

Our Branches: **TAIPIING, PERAK** Tel:+60 5 841 0053 - **SENAI, JOHOR** Tel:+60 7 590 8812 - **PRAI, PULAU PINANG** Tel:+60 4 397 9340  
**IPOH, PERAK** Tel:+60 5 282 8752 - **KUANTAN, PAHANG** Tel: +60 9 508 2138  
**KOTA KINABALU, SABAH** Tel: +60 88 383 513 - **BINTULU, SARAWAK** Tel: +60 86 252 182 / 252 192

Representative Office: **MYANMAR**, Liftech Engineering Co. Ltd Tel: +95 1 570 435 / **BRUNEI**, Goldcrest (B) Sdn Bhd Tel: +673 817 4718  
**THAILAND**, Pornrak Machinery Limited Tel: +66 2 5817 4718 / **INDONESIA**, PT Witara Trijaya Mandiri Tel: +62 6177 1919 86

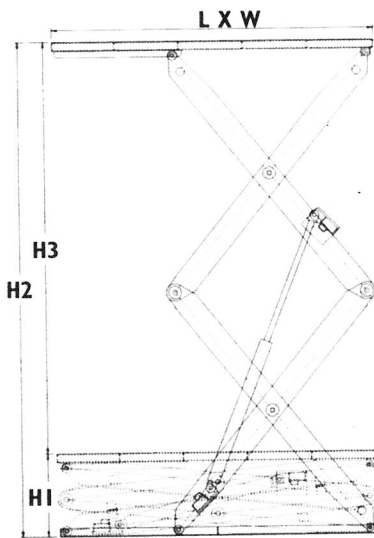
# FEATURES

1. Minimum necessary height is very much lowered by adoption of our unique cylinders.
2. As the arms are designed to be very firm, the lifter is free from lateral swing.
3. The lifter can stop at any optional position and is completely free from any natural drop even if leaving it for a long time.
4. As the hydraulic system is well rationalized, it is very easy and simple to adjust or manipulate the lifter.
5. The lifter is provided with electric circuits which can be synchronized with other machines in the line.



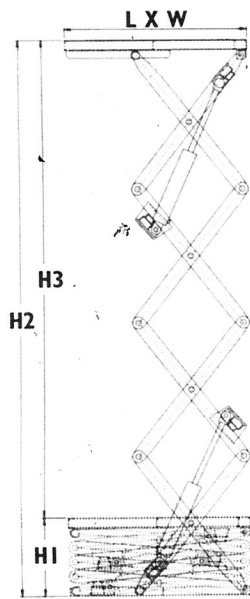
## ► I - STAGE

MODEL	CXL 0812-07-1	CXL 1020-12-2	CXL 1020-12-3	CXL 1224-15-2
Platform Size (mm)	800W X 1200L	1000W X 2000L	1000W X 2000L	1200W X 2400L
Lowered Height (mm) H1	250	300	300	300
Raised Height (mm) H2	950	1500	1500	1800
Vertical Travel (mm) H3	700	1200	1200	1500
Load Capacity (kg)	1000	2000	3000	2000
Elevating Time (50Hz) (sec)	17	39	36	50
Descending Time (sec)	Adjustable			
Cylinder (mm)	2 X Ø60	2 X Ø80	2 X Ø100	2 X Ø100
Electric Motor (kw)	0.75	1.5	2.2	2.2



## ► 2 - STAGE

MODEL	CXL 0812-13-1	CXL 1020-25-1	CXL 1020-25-2	CXL 1224-30-2
Platform Size (mm)	800W X 1200L	1000W X 2000L	1000W X 2000L	1200W X 2400L
Lowered Height (mm) H1	400	500	500	600
Raised Height (mm) H2	1700	3000	3000	3600
Vertical Travel (mm) H3	1300	2500	2500	3000
Load Capacity (kg)	1000	1000	2000	2000
Elevating Time (50Hz) (sec)	39	54	86	66
Descending Time (sec)	Adjustable			
Cylinder (mm)	1 X Ø80	2 X Ø80	2 X Ø100	2 X Ø100
Electric Motor (kw)	0.75	2.2	2.2	3.7



4 - Stages

## ► MULTI - STAGE

MODEL	CXL 1020-35-2	CXL 1224-45-2	CXL 1020-50-2	CXL 1224-60-2
No. Of Stage	3	3	4	4
Platform Size (mm)	1000W X 1200L	1200W X 2400L	1000W X 2000L	1200W X 2400L
Lowered Height (mm) H1	800	900	900	1150
Raised Height (mm) H2	4300	5400	5900	7150
Vertical Travel (mm) H3	3500	4500	5000	6000
Load Capacity (kg)	2000	2000	2000	2000
Elevating Time (50Hz) (sec)	51	58	58	75
Descending Time (sec)	Adjustable			
Cylinder (mm)	2 X Ø100	2 X Ø125	4 X Ø100	4 X Ø100
Electric Motor (kw)	3.7	5.5	5.5	5.5

\* We also provide customised design to suit your requirement and application  
 \*\* We reserve the right to change the specification without prior notice.